

TATA STEEL



Building Systems UK

A Tata Steel enterprise

Trimawall® Fast Fit internal walling system



Trimawall® Fast Fit

A pre-finished, demountable internal walling system

Created to help tackle the skills and supply chain shortages within construction, Trimawall® Fast Fit is a DfMA (Designed for Manufacture and Assembly) solution that can help unlock additional capacity both off-site and on-site, facilitating on-time, on-budget delivery of projects.

The Trimawall® universal mounting and panel system can be used throughout a building, both as a façade and internal fit out as a hybrid solution mounted over a wide range of structural wall types.

Future proofing buildings

The versatility of Trimawall® Fast Fit's individually demountable panels and accessible service cavity means that it can be installed, demounted and then reconfigured to adapt to changing needs of the building users.

Trimawall® Fast Fit delivers benefit for both construction companies and end clients.

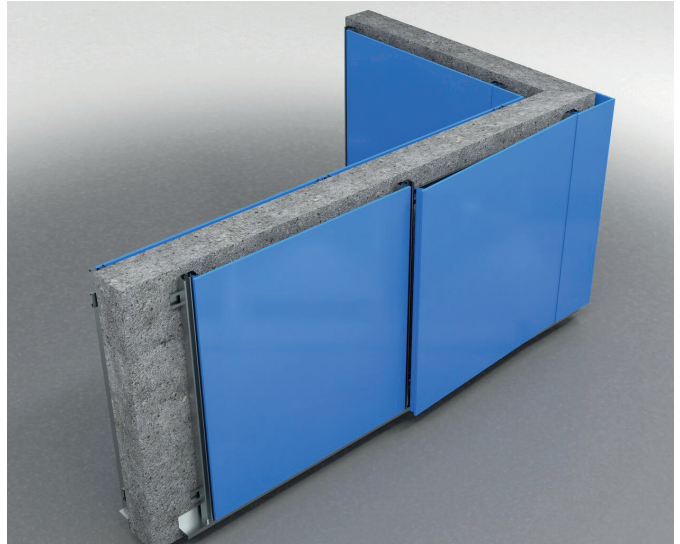
For Volumetric builders: With a systemised set of pre-cut, pre finished panels, off-site value can be maximised while factory productivity & output is increased.

For Traditional construction: Having a single pre-finished panel, rated to severe duty deflection & patresssing standards helps to minimise deliveries to site, on site waste and the need for wet trade finishing, vastly simplifying crew logistics and condensing build schedules

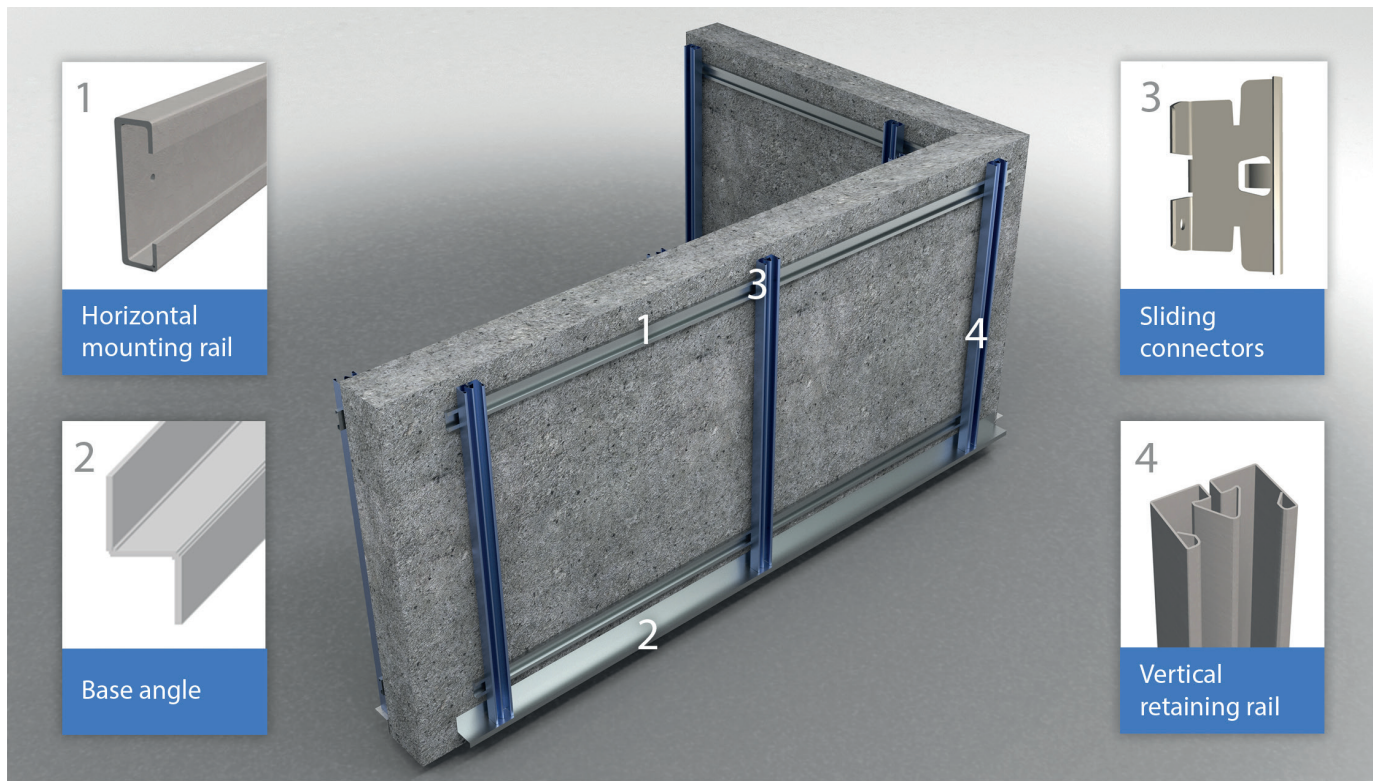
For M&E Installers: The pre-cut panels and accessible service cavity eliminates the hassle of threading and wall rework, reducing on site errors, ensuring detail consistency, and facilitating a much faster, simpler M&E install.

For Schools: The durable magnetic Colorcoat® walling is perfect for classroom displays, maintaining its appearance term after term, avoiding the expense and disruption of regular repainting.

For Commercial Offices and Retail: The individually demountable panels allow spaces to be adapted to changing occupier requirements, with panels relocated, reconfigured or replaced, enabling building & brand refreshes to be conducted overnight.



Standard kit of parts - Four standard components provide a universal mounting solution:



Quick and easy installation

Part	Description	Description	Material	Dimensions	Standard Lengths	Weight (kg/ln)
1	Horizontal Mounting Rail	Lipped C section provides main mechanical fix into structural wall	1.6mm Galvanised steel	55mm x 20mm	3000mm	1.5
2	Base Angle	Z profile create a level base for panels and support for skirting	2.0mm Galvanised Steel	65mm x 60mm x 65mm	3000mm	3
3	Sliding Connector	Twist in fit steel connetor allows easy positioniong of vertical rails	1.0mm eCoated spring steel	62mm x 32mm	n/a	n/a
4	Vertical Retaining Rail	Push fitted onto sliding connetors it then provides the receptor for Trimawall panels	1.0 mm Galvanised steel	53mm x 34mm	2800mm	1.7

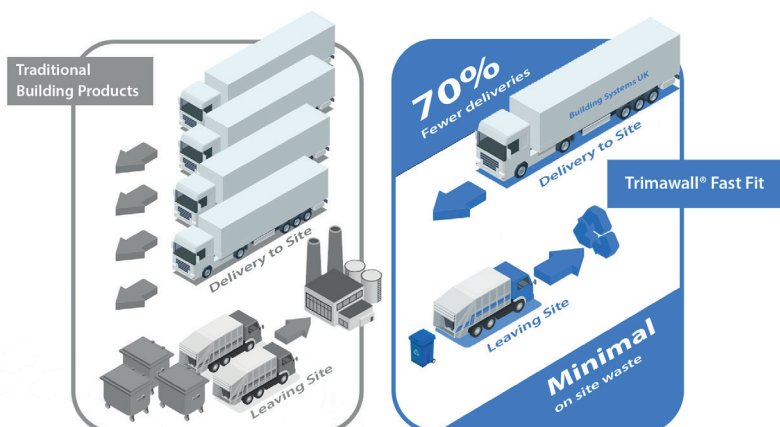
Sustainability

Trimawall® Fast Fit is manufactured and delivered as a kit of parts in order to minimise the environmental impact during construction and fit out.

One robust prefinished panel, reduces breakages / water damage during installation and minimises the use of sealants, glues, paints, further reducing waste disposal.

The 11mm thick Trimawall® panel incorporates a hygienic pre-finished front skin as part of a robust steel composite that provides all the requisite pattress strength required for Severe Duty rated walls.

Being delivered to site already cut to size with the Fast Fit clips pre-installed, Trimawall typically requires 70% less material deliveries and all but eliminates the on-site waste commonly associated with cutting, plastering & finishing internal walls.



www.tatasteeleurope.com/buildingsystemsuk

Trademarks of Tata Steel UK Limited

Colorcoat, Colorcoat HPS200 Ultra, Colorcoat Prisma, ComFlor, Confidex, Formawall, Platinum Plus, RoofDek, Trimapanel, Trisobuild and Trisomet are trademarks of Tata Steel UK Limited.

While care has been taken to ensure that the information contained in this publication is accurate, neither Tata Steel, nor its subsidiaries, accept responsibility or liability for errors or for information which is found to be misleading.

Before using products or services supplied or manufactured by Tata Steel and its subsidiaries, customers should satisfy themselves as to their suitability.



Copyright 2023

Tata Steel UK Limited

Scan for the latest version of this literature

Building Systems UK

A Tata Steel enterprise

Tata Steel

Shotton

Deeside

Flintshire

CH5 2NH

United Kingdom

T: +44 (0) 1244 892199

E: technical.envelopeproducts@tatasteeleurope.com

Tata Steel UK Limited, Registered Office: 18 Grosvenor Place, London SW1X 7HS, Registered in England No. 2280000

Language English 0422